



I-55 at IL 59 Access Project

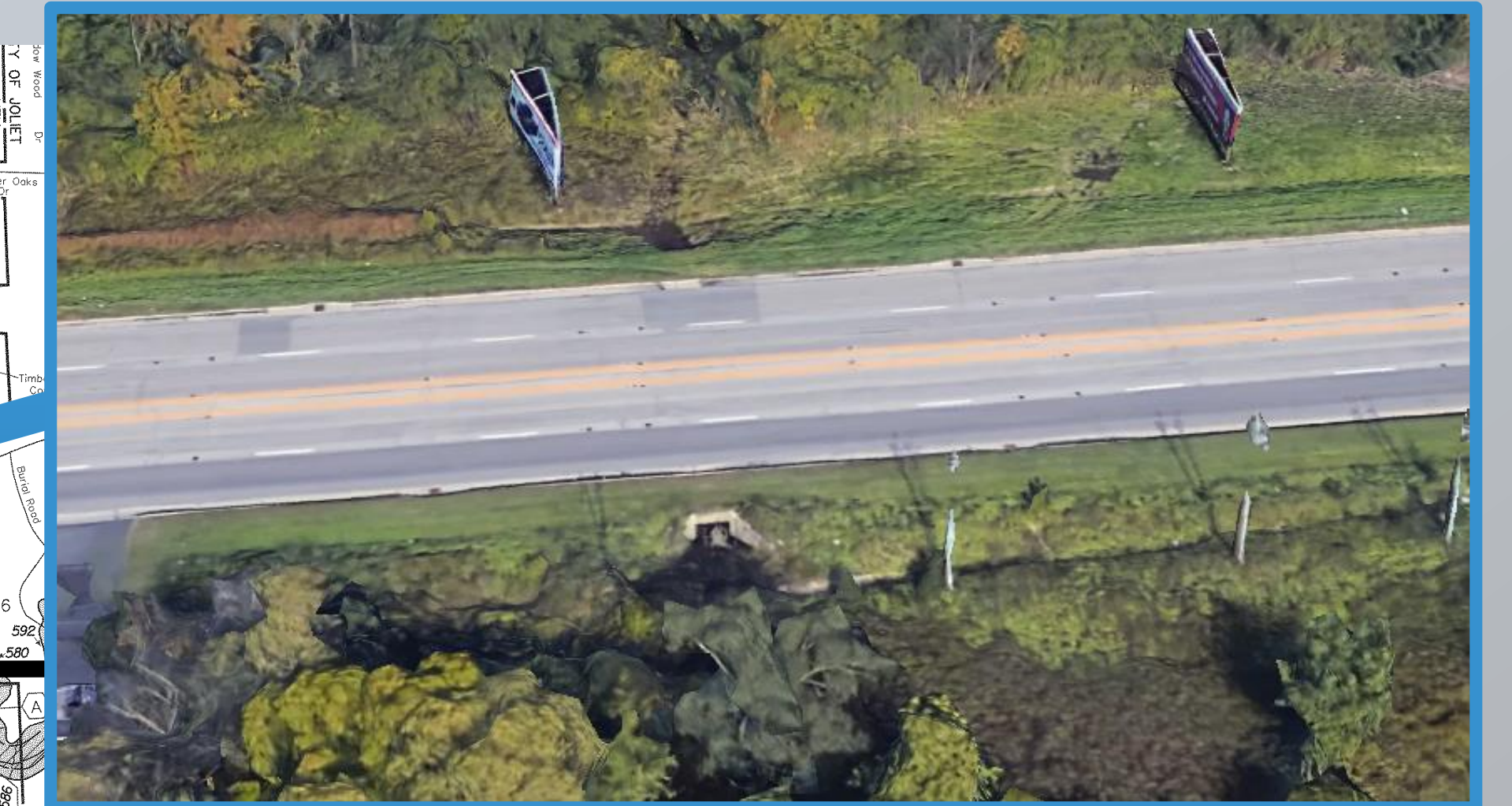
EXISTING FLOOD PLAIN CROSSINGS



US 52 at
DuPage
River



US 52 at
Rock Run
Slough



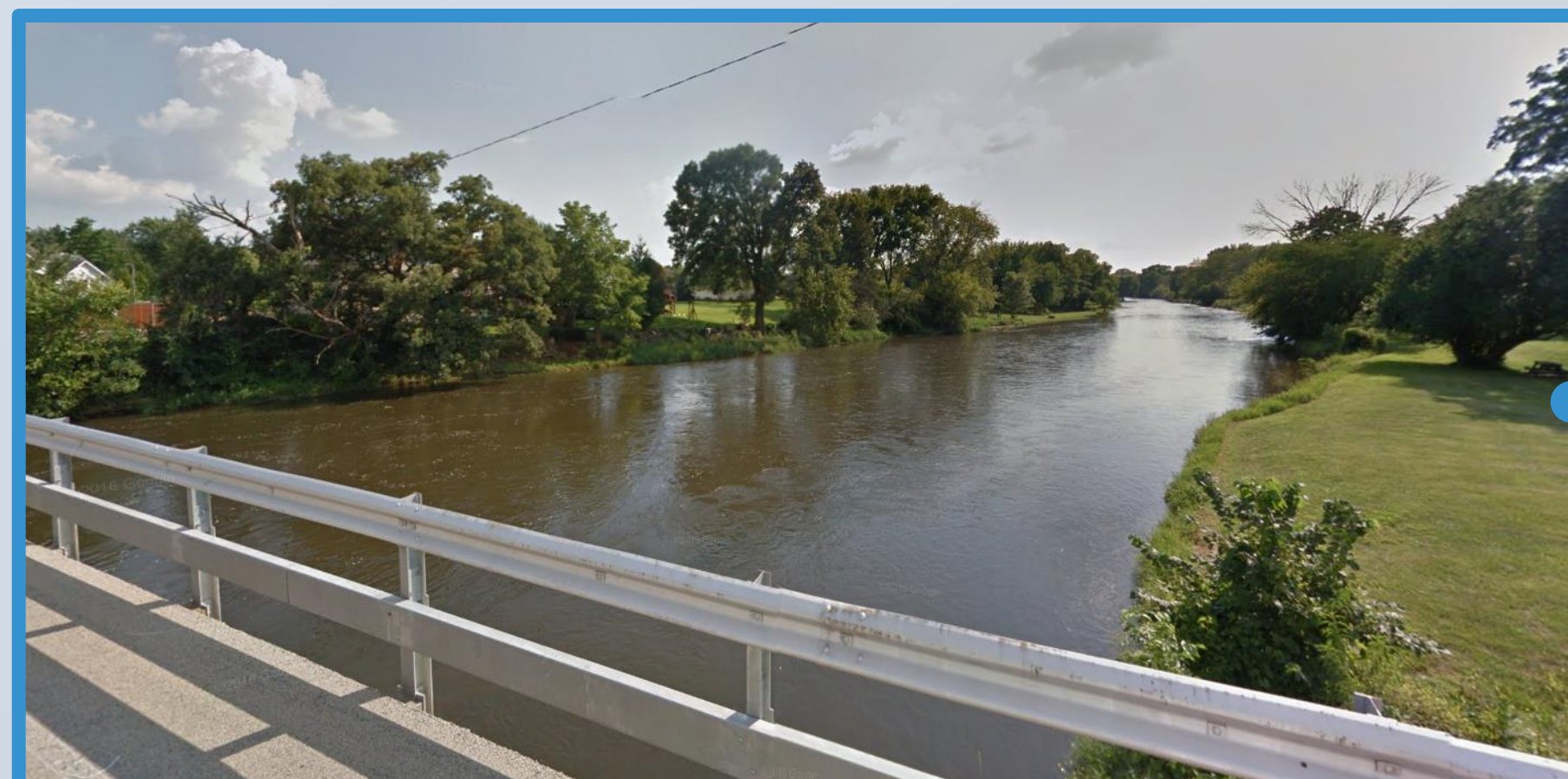
IL 59 at DuPage River



Houbolt Rd at Rock Run



Seil Rd at DuPage River



McDonough St at Rock Run



215th St / Mound Rd at
DuPage River



I-80 at Rock Run



I-80 at
DuPage
River

