

Community Advisory Group

What is the CAG?

- Small working group that assists the Project Study Group in identifying project elements that should be given additional consideration.
- Provides early and often project involvement with the public.
- Made up of volunteers and stakeholders who would like to be part of the study process.
- Stakeholder participation throughout the entire study

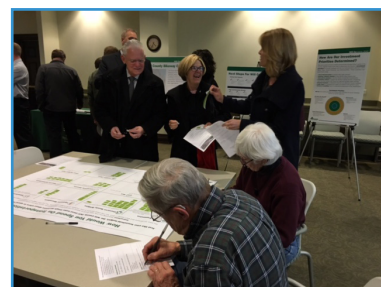
What Are CAG Member Expectations?

- Attend CAG Meetings and Participate In Group Workshop Activities
- Total of 6 Weekday Workshops Over 2 Years
- Meetings Typically Last About 2 Hours

Next Steps

- Please take a few minutes to fill out the project survey or remotely through the project website at i55atil59accessproject.org
- Please take your time to review the exhibits and materials in the adjoining room, and feel free to ask questions of the Project Study Team.
- Consider joining the Community Advisory Group.

Thank you!



Get Involved!

Interested in becoming a CAG member? Please fill out the form below and return to a project team member or mail to: Illinois Department of Transportation, 201 West Center Court, Schaumburg, IL 60196, Attn. Steven Schilke



I-55 at IL 59 Access Project

Name _____

Address _____

City _____ Zip _____

Email _____

Phone _____

www.i55atil59accessproject.org



I-55 at IL 59 Access Project



JOLIET

PUBLIC INFORMATION MEETING

Joliet Junior College
September 14, 2017
4:00 to 7:00 PM

Purpose of tonight's public meeting:

- Explain the study process and schedule
- Become familiar with the project area
- Solicit input on transportation issues and needs
- Meet members of the project study team
- Seek volunteers to be on the Community Advisory Group (CAG) team

www.i55atil59accessproject.org



The Focus of this Study is to:

- Identify transportation and safety issues
- Develop alternatives to address these transportation and safety issues
- Evaluate impacts associated with each alternative
- Refine alternatives best meeting project needs
- Recommend a preferred alternative

Public Involvement

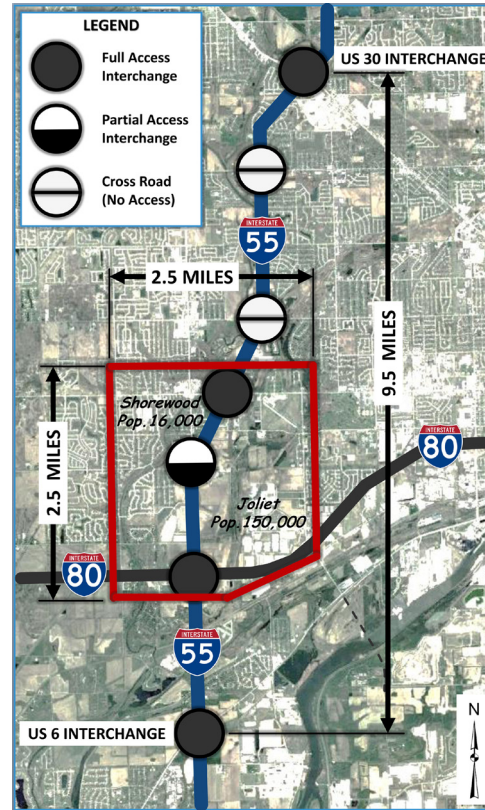
On major projects, IDOT utilizes an extensive public involvement and awareness process, referred to as Context Sensitive Solutions, or CSS.

The CSS process is designed to provide all stakeholders a wide range of opportunities to be actively engaged and provide meaningful input toward and during the study, as well as receive updates on the study as it progresses.

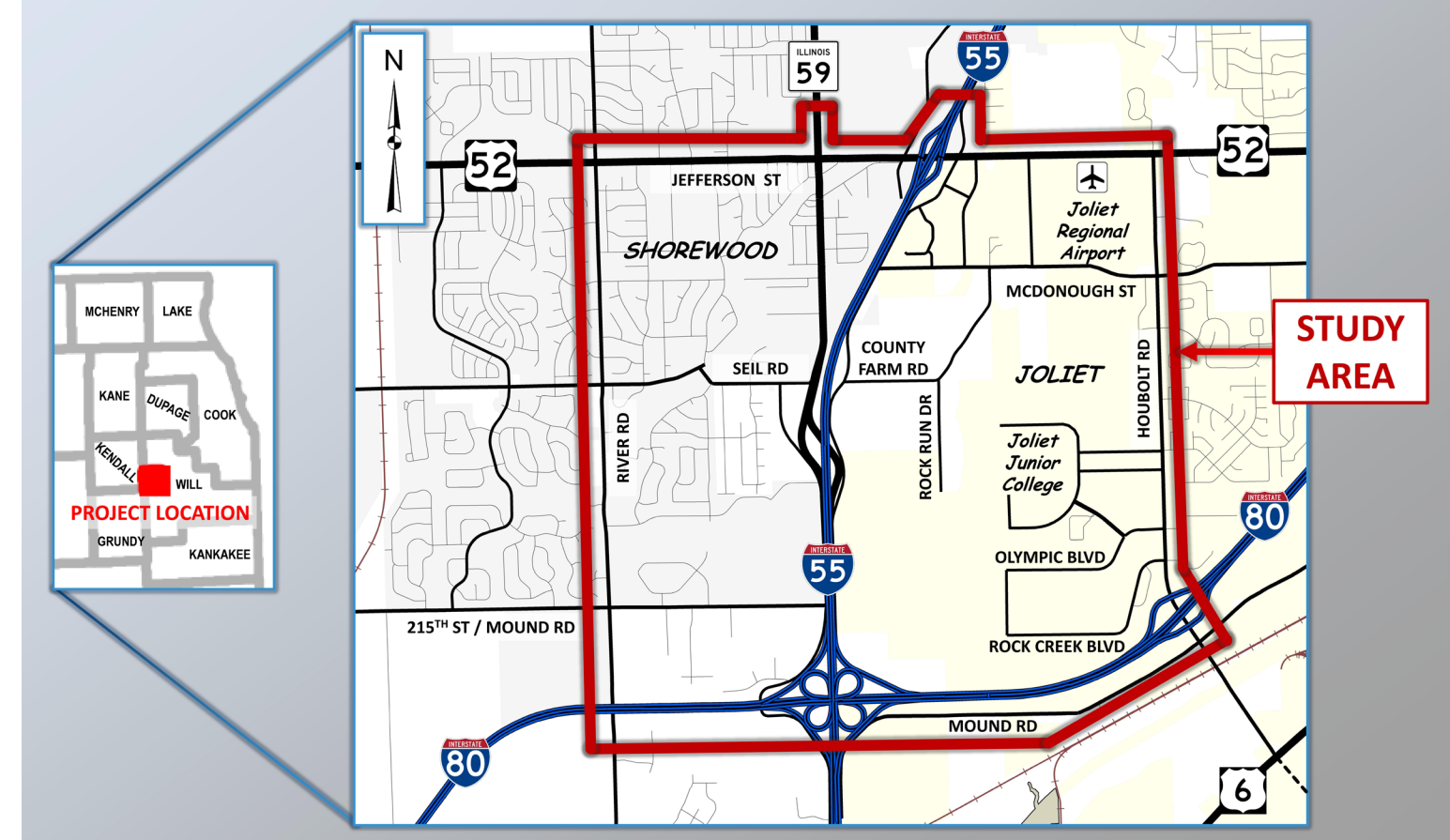


Study Area Characteristics

The project study is located in the City of Joliet and Village of Shorewood, with respective populations of approximately 150,000 and 16,000 residents. The study area is 2.5 miles in length and width. The project is focused on the central portion of a larger 9.2 mile I-55 system segment, from US 6, located south of I-80, to US 30, located north of US 52. Within the 9.2 mile segment, there is only one full access interchange located at US 52 and one partial access interchange at IL 59 and I-55.



Project Location Map



Project Phases

Phase I

Preliminary Engineering and Environmental Study

Currently Funded

Phase II

Contract Plan Preparation and Land Acquisition

Not Currently Funded

Phase III

Construction

Not Currently Funded

NEPA Policy

This I-55 Phase I Study will be performed in accordance with the National Environmental Policy Act of 1969. NEPA is the federal law which outlines policies to identify, evaluate and consider the environment and the effects any improvement will have on it.

Study elements to be evaluated relative to the NEPA policy include:

- Socio Economics
- Air and Noise
- Farmlands
- Parklands
- Water Resources
- Threatened and Endangered Species
- Cultural and Archaeological Resources



Major Environmental Resources

An initial environmental inventory of resources will be defined as the study progresses, and evaluated through the previously described NEPA process. Major environmental resources include: Hammel Woods and Colvin Grove Forest Preserves, trails and natural areas, wetlands and floodplains along both the DuPage River and Rock Run and their tributaries, and recreational and wildlife in the project study area.

The NEPA process also includes evaluation of impacts to potential historic resources. Within the project study area, an airport hangar built in the 1930's is located at the Joliet Airport, and is listed in the National Registry Of Historic Places.



Project Schedule

