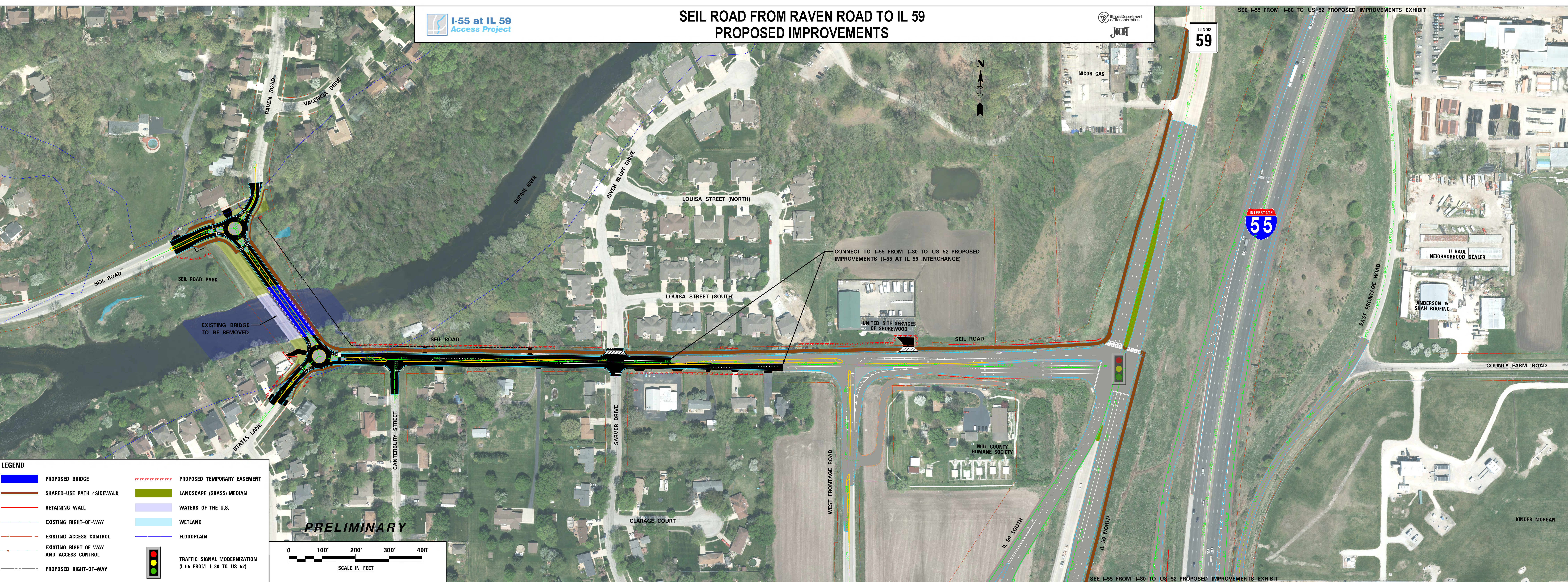


SEIL ROAD FROM RAVEN ROAD TO IL 59 PROPOSED IMPROVEMENTS

ILLINOIS
59

INTERSTATE
55



CONNECT TO I-55 FROM I-80 TO US 52 PROPOSED IMPROVEMENTS (I-55 AT IL 59 INTERCHANGE)

UNITED SITE SERVICES OF SHOREWOOD

WILL COUNTY HUMANE SOCIETY

LEGEND

	PROPOSED BRIDGE		PROPOSED TEMPORARY EASEMENT
	SHARED-USE PATH / SIDEWALK		LANDSCAPE (GRASS) MEDIAN
	RETAINING WALL		WATERS OF THE U.S.
	EXISTING RIGHT-OF-WAY		WETLAND
	EXISTING ACCESS CONTROL		FLOODPLAIN
	EXISTING RIGHT-OF-WAY AND ACCESS CONTROL		TRAFFIC SIGNAL MODERNIZATION (I-55 FROM I-80 TO US 52)
	PROPOSED RIGHT-OF-WAY		

PRELIMINARY

SCALE IN FEET