

WELCOME



**I-55 at IL 59
Access Project**

**COMMUNITY ADVISORY GROUP
MEETING #1**

**Joliet Junior College
October 10, 2017**



**Illinois Department
of Transportation**

www.i55atil59accessproject.org

JOLIET



I-55 at IL 59
Access Project

**Community
Advisory
Group**

Meeting #1
October 10, 2017



Illinois Department
of Transportation

JOLIET

OUTLINE / AGENDA

- Introductions
- Study Overview
- Role and Goals of CAG
- Recap the Public Information Meeting
- Group Exercise – Issues and Concern
- Problem Statement Development
- Closing / Next Steps

WELCOME AND INTRODUCTIONS



Project Study Team

Illinois Department of Transportation

Steve Schilke – Major Projects Unit Head

Osman Baker – Project Engineer

City of Joliet

Steve Jones – Deputy City Manager

Greg Ruddy – Public Works Administrator

Knight E/A, Inc.

Chuck Sommer – Project Manager

Matt Maestranzi – Project Engineer

Jaime Blakesley – Environmental Lead

Rob McHugh – Drainage and Hydraulics

Noreen Ellis - Communications

Metro Strategies, Inc.

Tammy Wierciak - Public Involvement



I-55 at IL 59
Access Project

Community Advisory Group

Meeting #1 – October 10, 2017

www.i55atil59accessproject.org





I-55 at IL 59
Access Project

**Community
Advisory
Group**

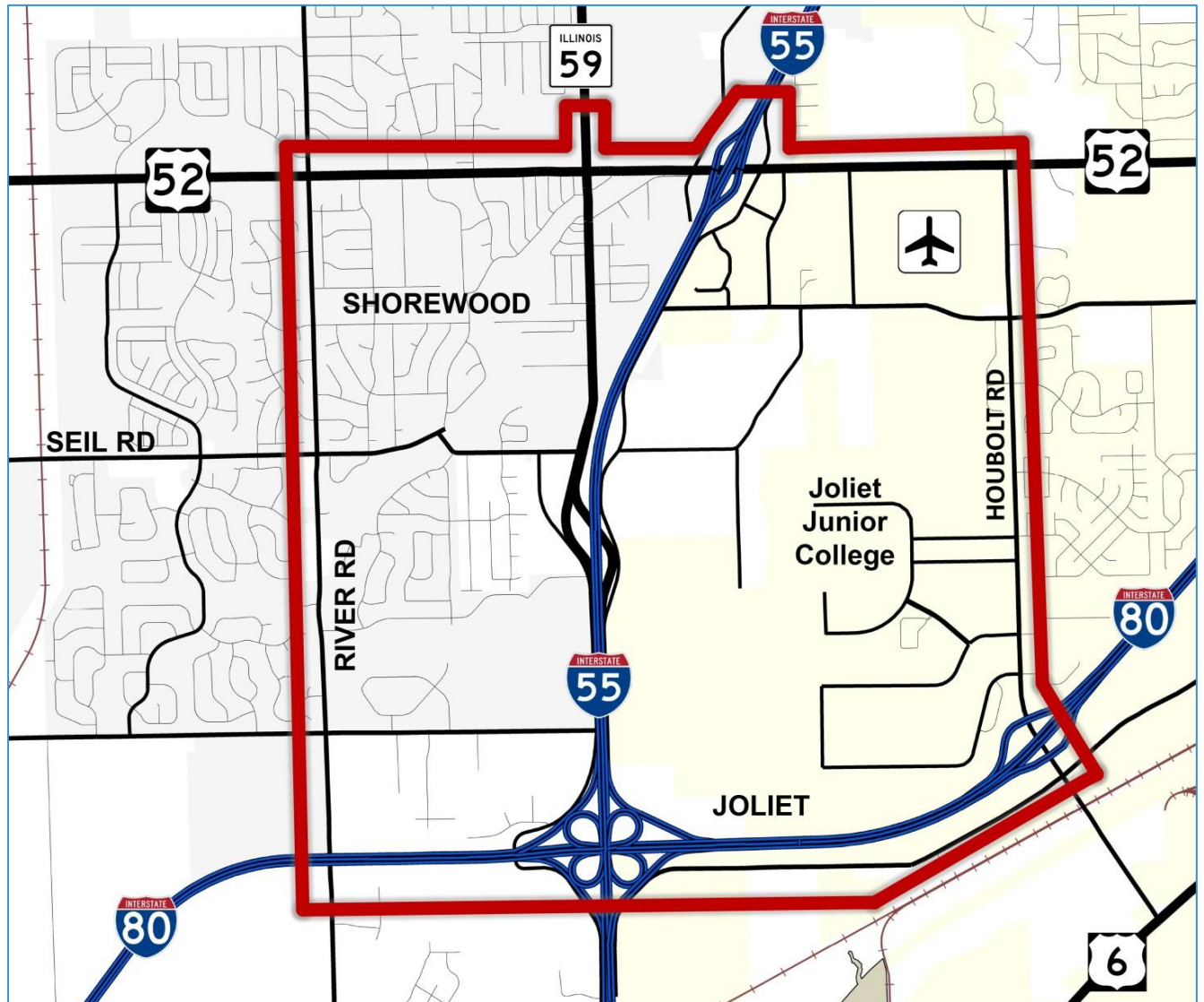
Meeting #1
October 10, 2017



Illinois Department
of Transportation

JOLIET

STUDY AREA



STUDY AREA CHARACTERISTICS

Major roadways:

State Jurisdiction

- I-55
- I-80
- US 52
- IL 59

Joliet Jurisdiction

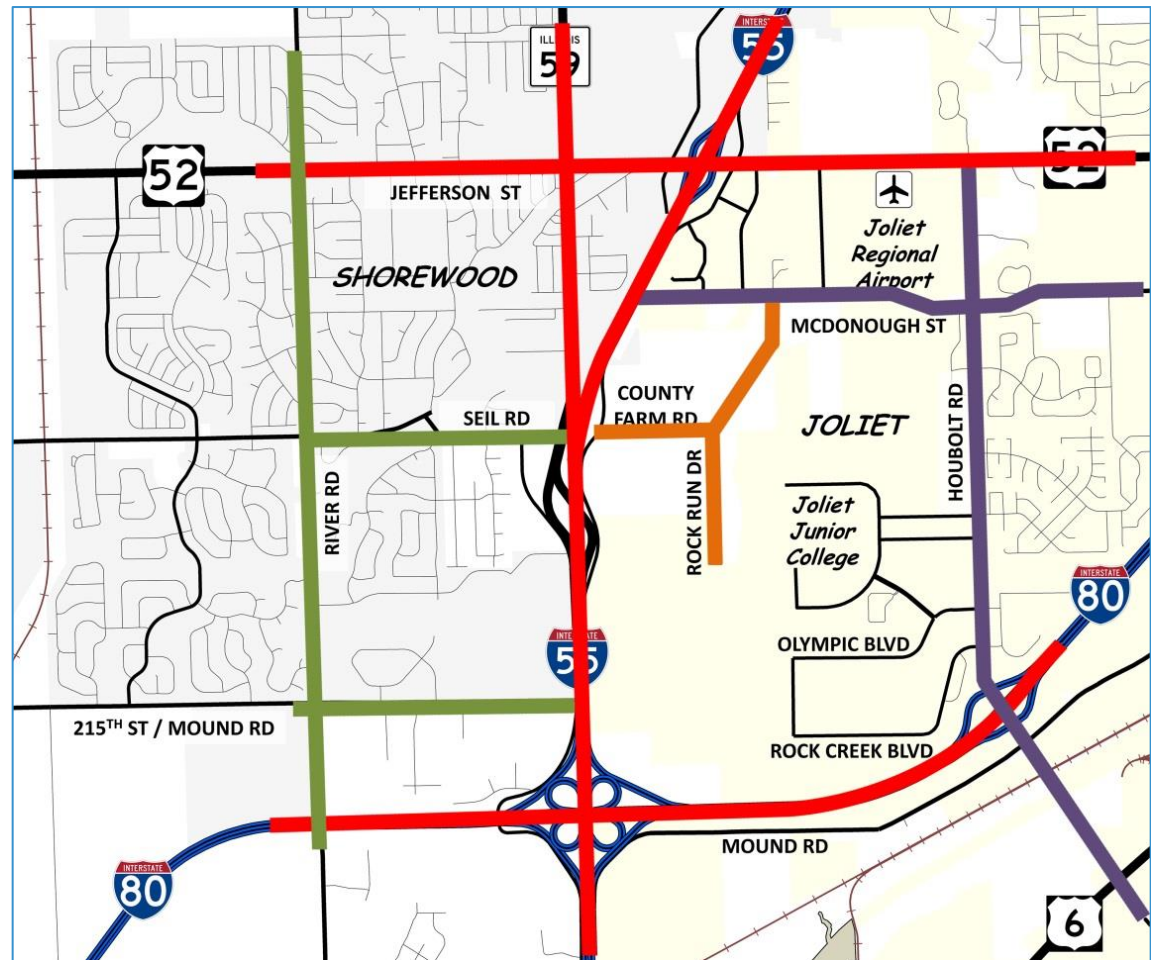
- Houbolt Rd
- McDonough St

Shorewood Jurisdiction

- Seil Rd
- Mound Rd / 215th
- River Rd

Troy Township

- County Farm Road
- Rock Run Drive



I-55 at IL 59
Access Project

Community Advisory Group

Meeting #1 – October 10, 2017



JOLIET

www.i55atil59accessproject.org



I-55 at IL 59
Access Project

Community Advisory Group

Meeting #1
October 10, 2017



Illinois Department
of Transportation

JOLIET

PROJECT PROCEDURES / PROCESS

Focus of Project Study

- **Defining**
transportation and safety issues
- **Identifying**
environmental, community and other study area concerns
- **Developing**
alternatives to address these transportation and safety issues
- **Evaluating**
impacts associated with each alternative
- **Refining**
alternatives which best meet project needs
- **Recommending**
a preferred alternative



I-55 at IL 59
Access Project

Community Advisory Group

Meeting #1
October 10, 2017



Illinois Department
of Transportation

JOLIET

PROJECT PROCEDURES / PROCESS

Environmental Studies / NEPA

*National Environmental Policy Act of 1969 (NEPA) is
Federal Law and Policy on the Environment*

Study Elements to be Evaluated

- Socio-Economics
- Air and Noise
- Farmlands
- Parklands
- Water Resources
- Threatened & Endangered Species
- Cultural & Archaeological Resources



PROJECT PROCEDURES / PROCESS

Public Involvement



I-55 at IL 59
Access Project

Community Advisory Group

Meeting #1 – October 10, 2017



Illinois Department
of Transportation

JOLIET

www.i55atil59accessproject.org

PROJECT PROCEDURES / PROCESS



CSS Tools for Stakeholder Involvement

- Public Meetings and Hearing
- Community Advisory Group
- Project Website
- Context Audit/Project Survey



I-55 at IL 59
Access Project

Community Advisory Group

Meeting #1 – October 10, 2017



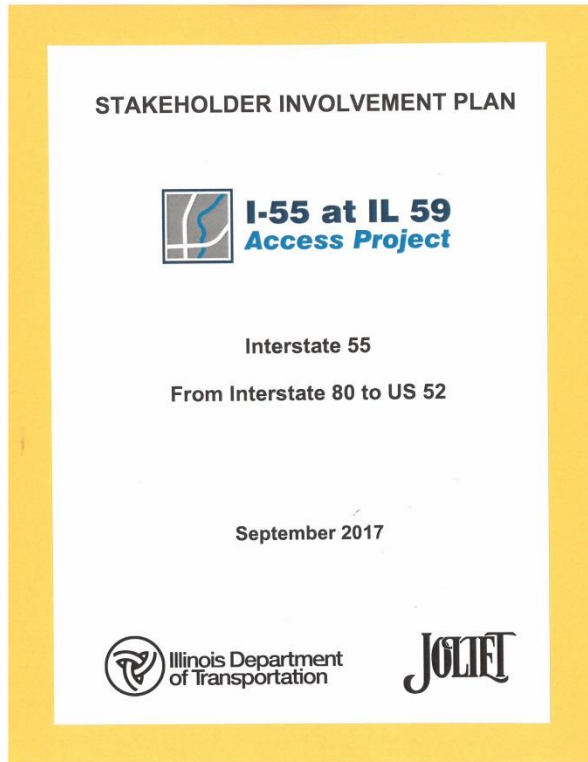
Illinois Department
of Transportation

JOLIET

www.i55atil59accessproject.org

PROJECT PROCEDURES / PROCESS

Stakeholder Involvement Plan



- Defines the CSS process and tools used on the project
- Available for viewing at the public information meeting
- Full document available on the project website



I-55 at IL 59
Access Project

Community Advisory Group

Meeting #1
October 10, 2017



Illinois Department
of Transportation

JOLIET

PROJECT OVERVIEW

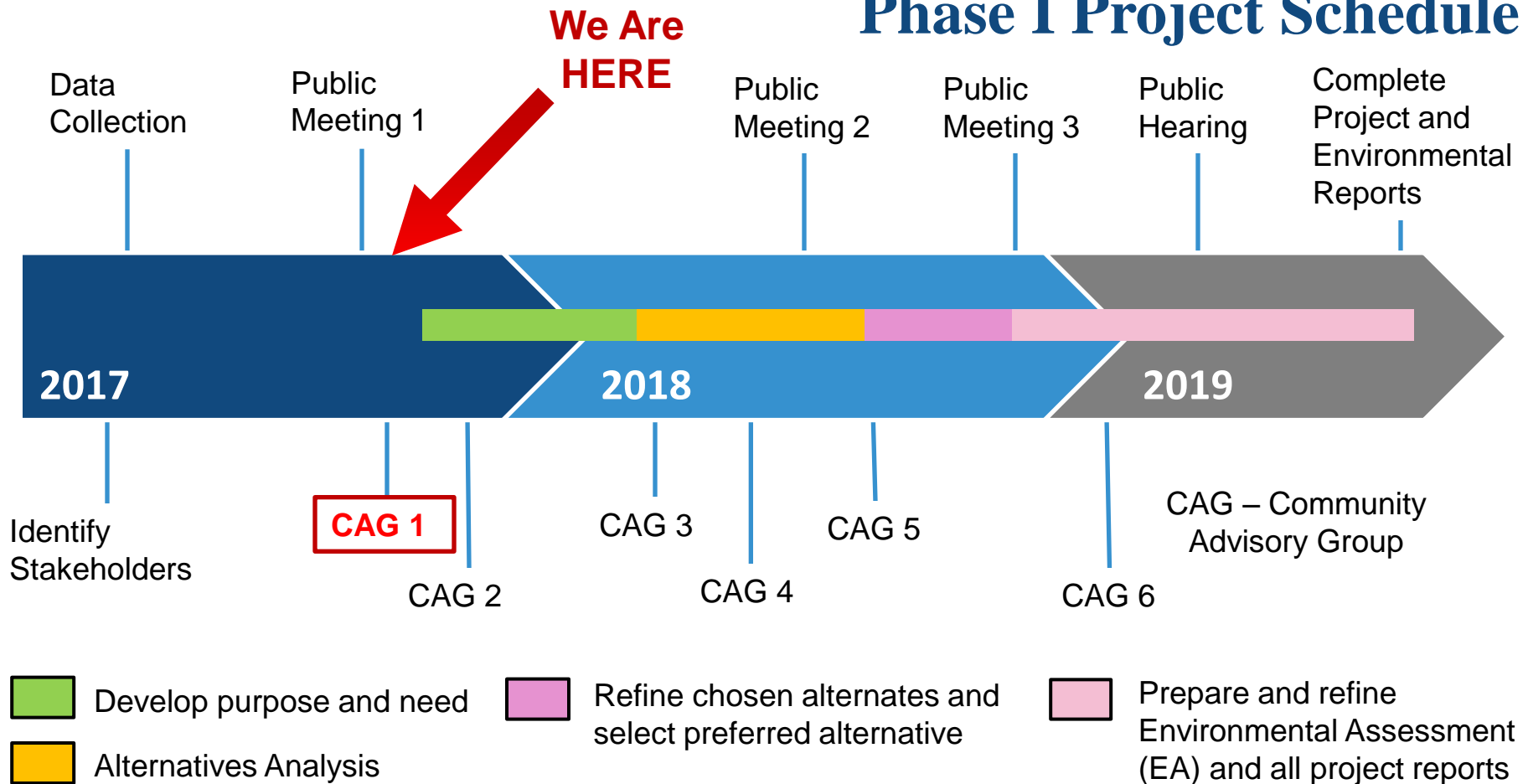
Contributing Factors to Consider

- Environment
- Land Use (existing and future)
- Centers of Education (Joliet Jr. College, high school and grade schools, direct and indirect)
- Emergency and Medical Response Centers (Fire, Police, Hospital)
- Truck and Bus Routes
- Community Characteristics, History and Architecture



PROJECT SCHEDULE

Phase I Project Schedule



I-55 at IL 59
Access Project

Community Advisory Group

Meeting #1 – October 10, 2017



Illinois Department
of Transportation

JOLIET

www.i55atil59accessproject.org



I-55 at IL 59
Access Project

Community Advisory Group

Meeting #1
October 10, 2017



Illinois Department
of Transportation

JOLIET

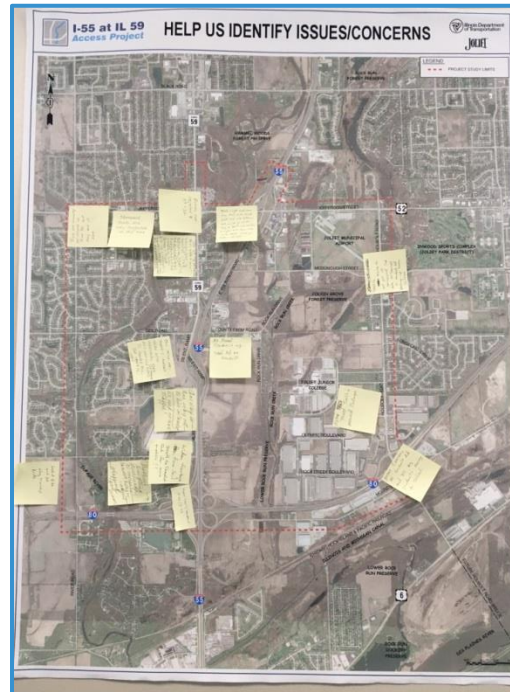
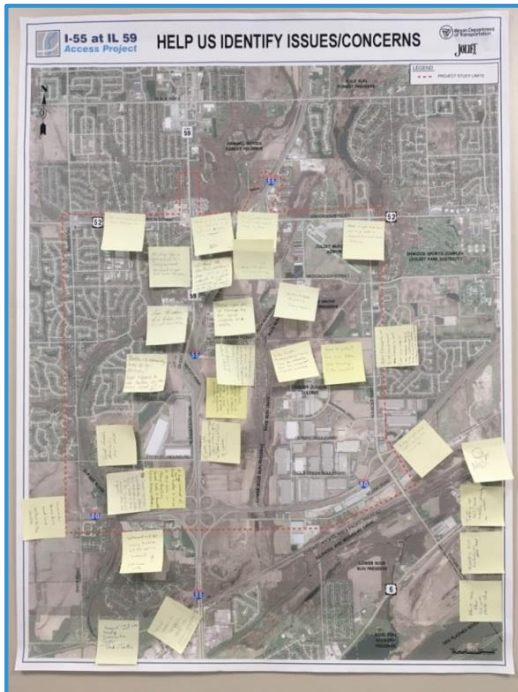
PROJECT PROCEDURES / PROCESS

CAG Ground Rules

1. Input from all stakeholders will be duly considered with the goal of reaching the best solution to the problems identified.
2. Input from all participants is valued and considered.
3. All participants must keep an open mind and participate openly and honestly.
4. All participants must work collaboratively to seek the best solution.
5. All participants must treat each other with respect and dignity.
6. The project has a schedule and must proceed in a reasonable manner.
7. All options and alternates considered must support a priority to accommodate safety.

PUBLIC INFORMATION MEETING 1 RECAP

September 14, 2017



Issues/concerns identified by stakeholders



Audio/Video Presentation



Comments & Survey



Project Study Staff & Display Room Exhibits



I-55 at IL 59
Access Project

Community Advisory Group

Meeting #1 – October 10, 2017



Illinois Department
of Transportation

JOLIET

www.i55atil59accessproject.org



I-55 at IL 59
Access Project

Community Advisory Group

Meeting #1
October 10, 2017



Illinois Department
of Transportation

JOLIET

PUBLIC MEETING 1 RECAP

Common Comments - Transportation

- Heavy Traffic and Congestion, particularly on US 52, IL 59 and I-55
- US 52 intersections at I-55 ramps and IL 59 operate poorly
- High number of accidents on US 52 and along Houbolt Road
- Very difficult weaving movement between I-80 ramp northbound and I-55 off ramp to IL 59 northbound
- Truck traffic on local streets is heavy and diverts through residential areas. You need to find a better way for them to get to and from I-55.
- I-55 western frontage road under I-80 is dangerous. It needs to be widened and the vertical clearance increased.
- Seil Road cannot support new ramps and a bridge; truck traffic is already heavy in the area
- Need better east-west access; US 52 is the only option and a bad one; Seil Road is a good option



I-55 at IL 59
Access Project

Community Advisory Group

Meeting #1
October 10, 2017



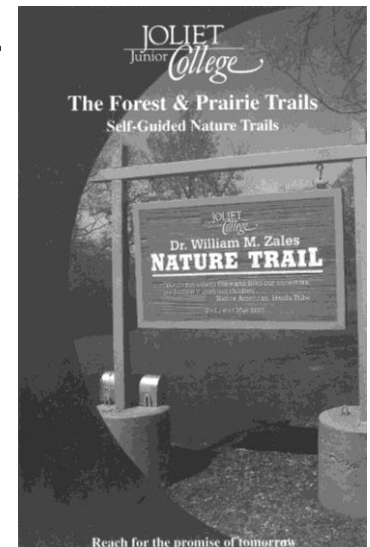
Illinois Department
of Transportation

JOLIET

PUBLIC MEETING 1 RECAP

Common Comments - Environment

- Sound and noise from the interstate is a big concern; need trees or walls as a sound buffer.
- Noise has increased significantly within the last few years.
- Forest preserve bicycle and hiking trails are important.
- Joliet Junior College Natural Areas include a fen, prairie restoration and trails that need to be protected; Natural areas are also used in JJC biology curriculum.
- Wildlife corridors and Blandings Turtle habitats.
- Township roads lack bike and pedestrian accommodations.





I-55 at IL 59
Access Project

Community Advisory Group

Meeting #1
October 10, 2017



Illinois Department
of Transportation

JOLIET

WORKSHOP Issues and Concerns

WORKSHOP GOAL

- Issues/concerns will be used to draft a project problem statement
- Problem statement will help to define a project purpose and need

WORKSHOP METHOD

- Workshop will break into small discussion groups to:
 - Identify project issues and concerns by group category
 - Assign priority/importance of identified issues
 - Assign one speaker per group to summarize





I-55 at IL 59
Access Project

**Community
Advisory
Group**

Meeting #1
October 10, 2017



Illinois Department
of Transportation

JOLIET

WORKSHOP
Project Problem Statement

Section 1:

The transportation problem(s) along I-55, from I-80 to US 52, to be solved by this project is/are:



I-55 at IL 59
Access Project

**Community
Advisory
Group**

Meeting #1
October 10, 2017



Illinois Department
of Transportation

JOLIET

WORKSHOP
Project Problem Statement

Section 2:

The transportation problem(s) associated with local routes integral to I-55 within the project study area to be solved by this project is/are:



I-55 at IL 59
Access Project

**Community
Advisory
Group**

Meeting #1
October 10, 2017



JOLIET

WORKSHOP

Project Problem Statement

Section 3:

Additional CAG identified issues and concerns are:



I-55 at IL 59
Access Project

**Community
Advisory
Group**

Meeting #1
October 10, 2017



Illinois Department
of Transportation

JOLIET

NEXT STEPS / CLOSING

THANK YOU

Future CAG meetings will be:

November 14, 2017

February 2018

March 2018

June 2018

November 2018