

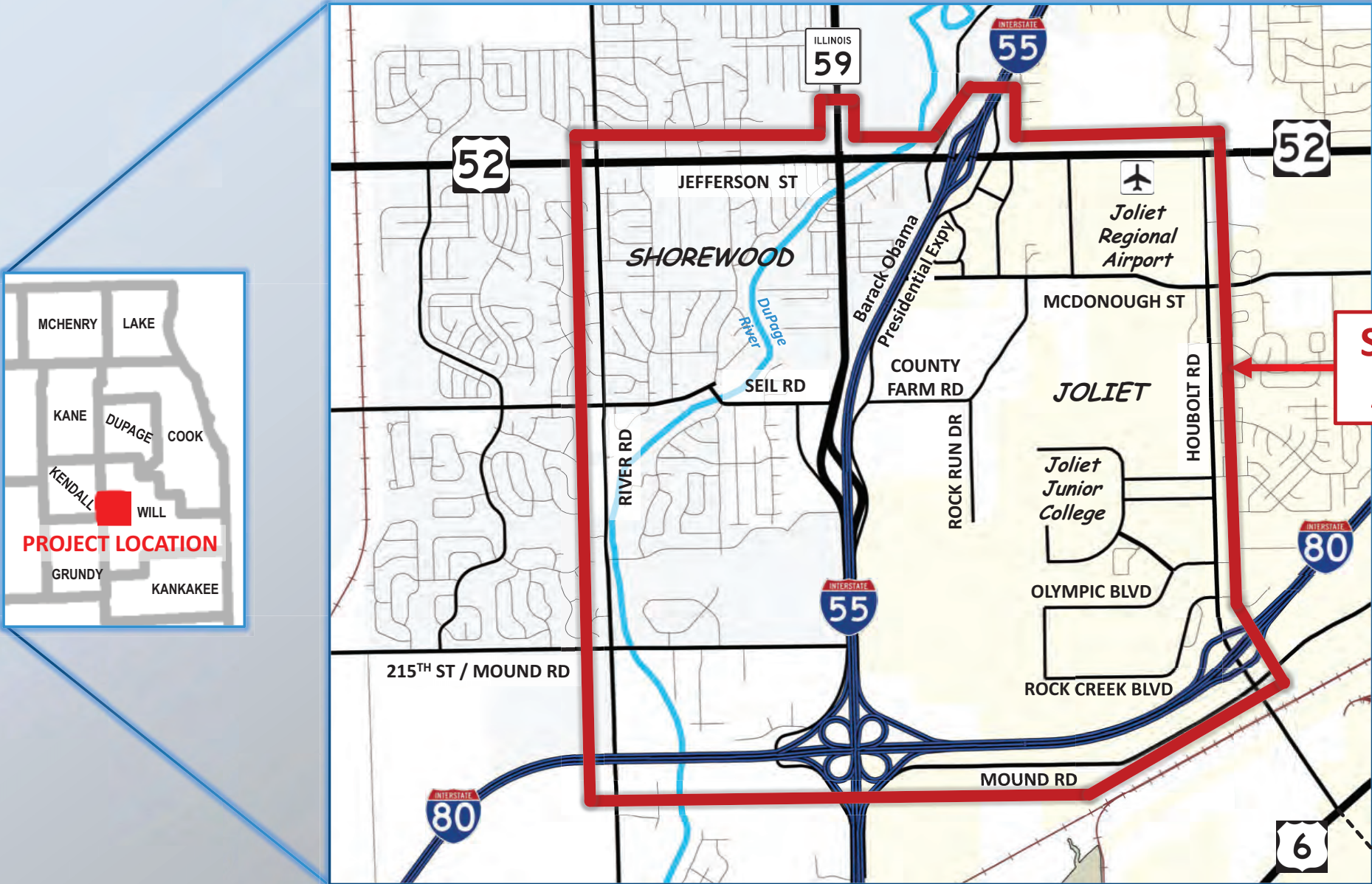


I-55 at IL 59 Access Project

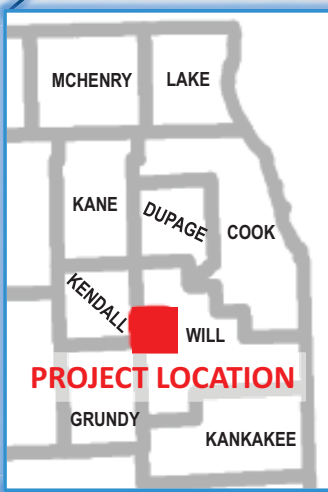
PROJECT LOCATION MAP



JOLIET

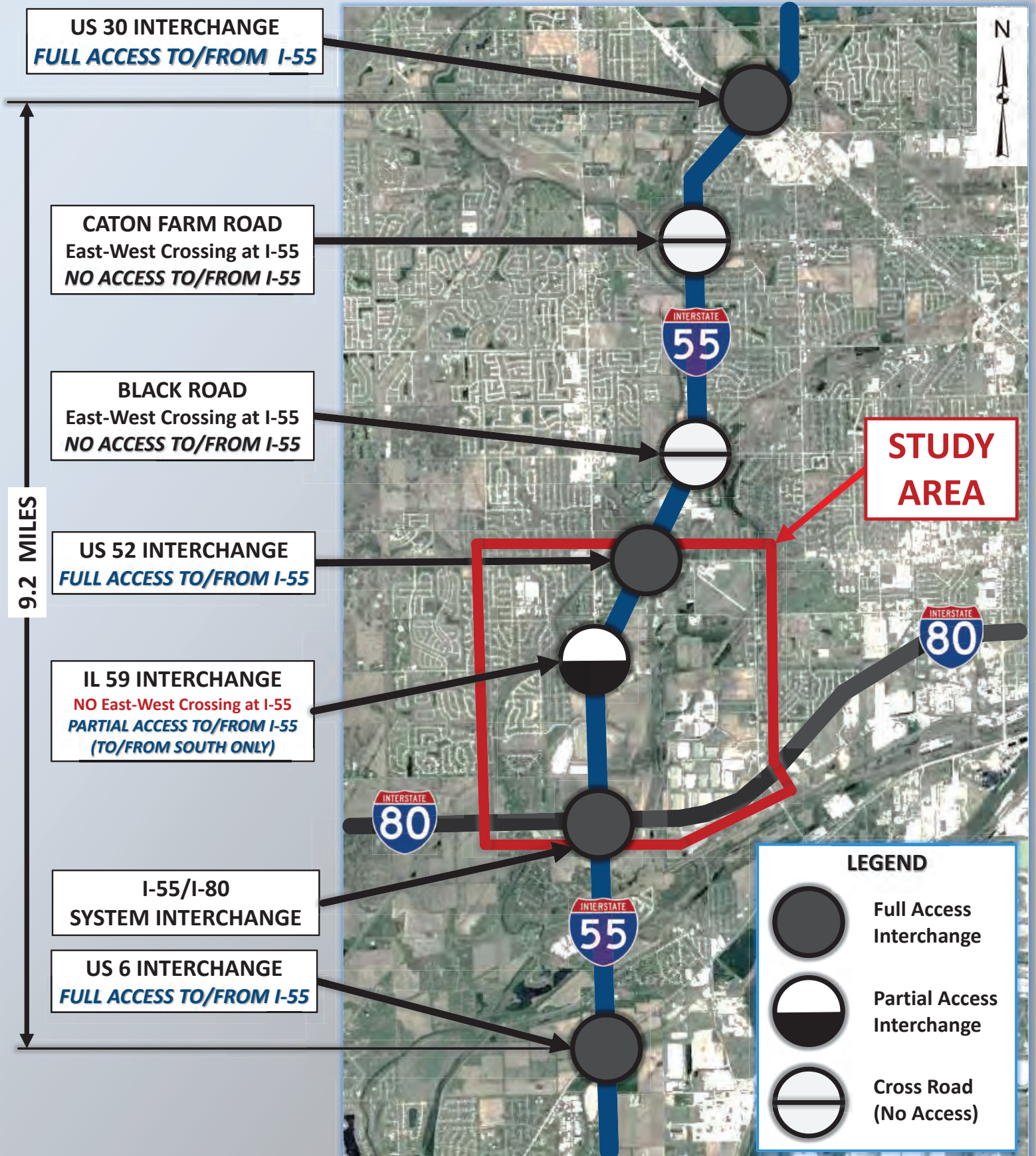


**STUDY
AREA**

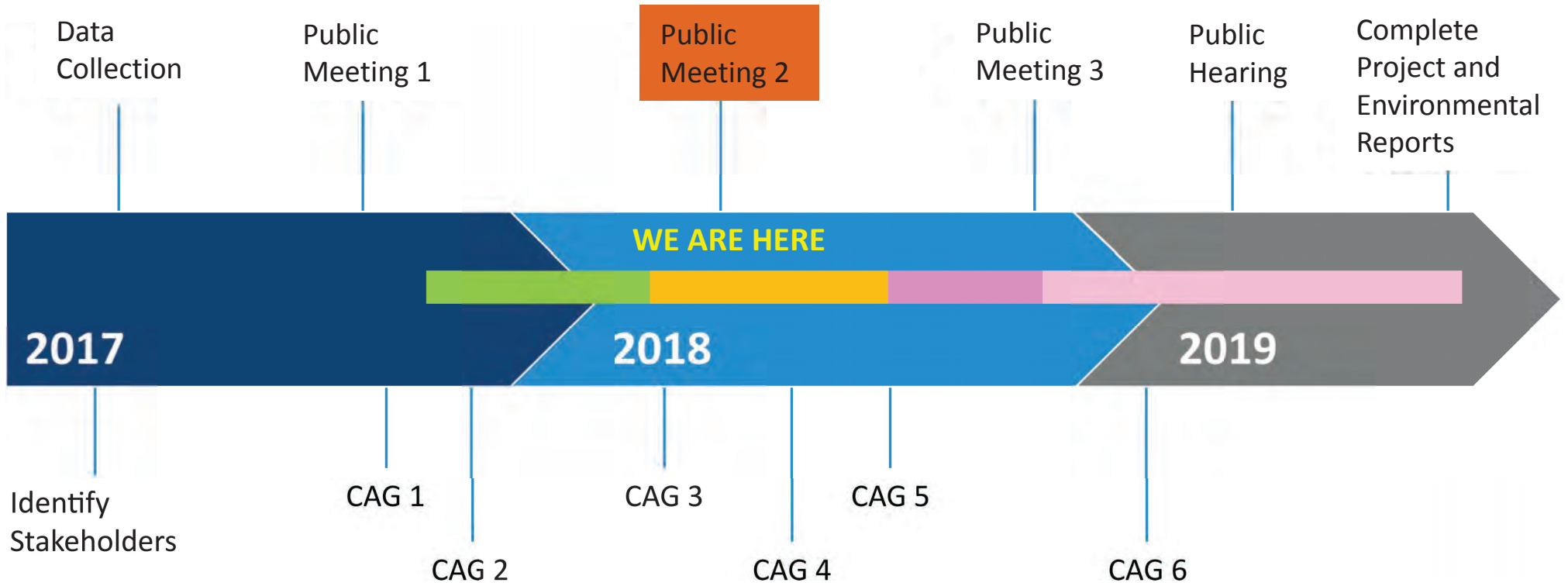




I-55 ACCESS INVENTORY MAP



PROJECT SCHEDULE



CAG – Community Advisory Group

LEGEND

- DEVELOP PURPOSE AND NEED**
- ALTERNATIVES ANALYSIS**
- REFINE ALTERNATIVES & SELECT PREFERRED ALTERNATIVE**
- PREPARE AND REFINE ENVIRONMENTAL ASSESSMENT (EA) AND ALL PROJECT REPORTS**

4 - YEAR CRASH HISTORY

2012-2015

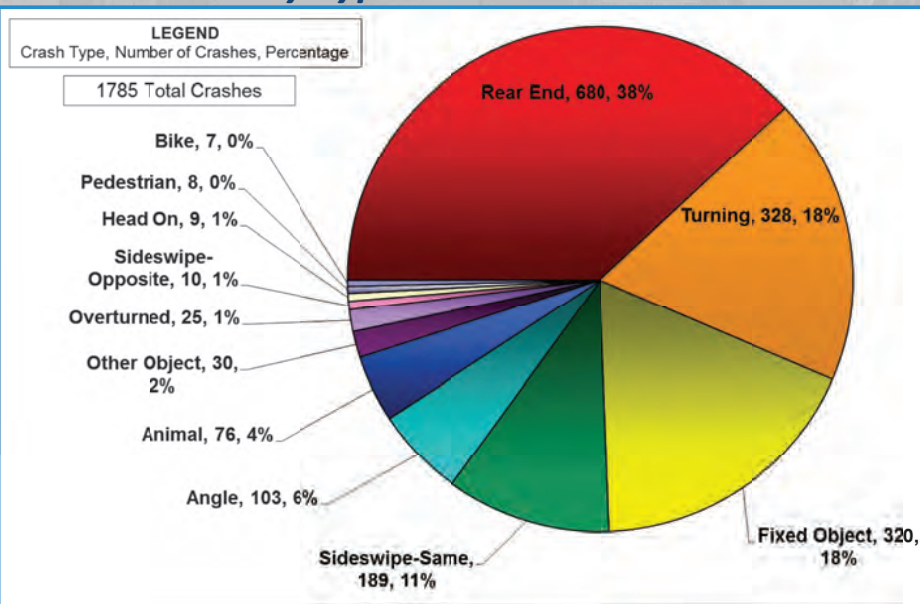
QUICK CRASH FACTS

- **1,785 Total Crashes** occurred within the study area in a 4-Year Period
- **5 Crashes** Involved a **Fatality**
- **61 Crashes** Involved a **Type A / Incapacitating Injury**
- **I-55 and US 52** Contain High Crash / 5 Percent Locations
- **Most common** crash types are **rear-end, turning and fixed object**
- **15 crashes** involved a **pedestrian** or a **bicyclist**

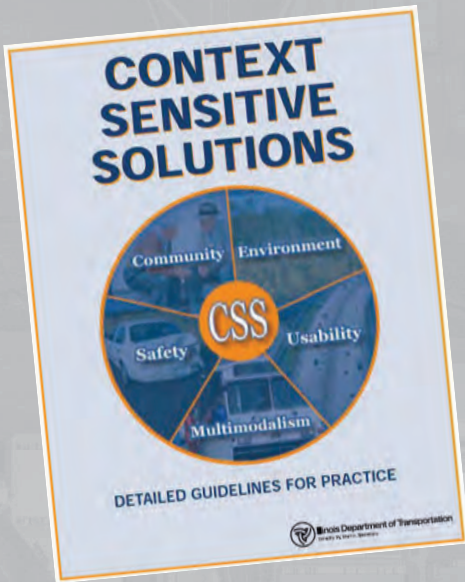
Crashes by Location and Severity



Total Crashes By Type



CONTEXT SENSITIVE SOLUTIONS (CSS)



CONTEXT SENSITIVE SOLUTIONS
is a collaborative, interdisciplinary and holistic approach to the development of transportation projects.

GENERAL UNDERSTANDING OF AGREEMENT

- When a majority of stakeholders agree on an issue or solution.
- Dissenting stakeholders agree their input has been heard and considered.
- It is **NOT** expected to achieve total agreement from **ALL** parties.
- It does not compromise operations and safety.
- All stakeholders understand transportation agency is the final decision maker.



CONTEXT

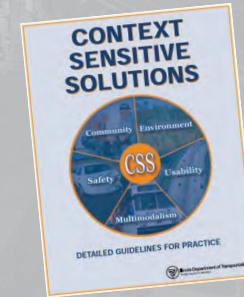
- All elements related to the people and place where a project is located.
- Includes visible element such as environmental and historical resources.
- Includes invisible elements such as community values, traditions and/or expectations.



COMMUNITY ADVISORY GROUP (CAG)

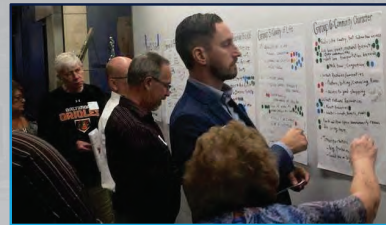
WHAT IS THE CAG?

- Small working group that assists the Project Study Group in identifying project elements that should be given additional consideration.
- Made up of volunteers and stakeholders who would like to be part of the study process.



CAG MEETING #1 – October 10, 2017

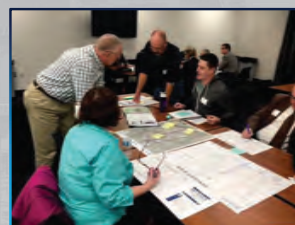
- Study Overview
- NEPA Environmental Studies Process
- Description of CSS Process and Tools
- Stakeholder Involvement Plan
- Role and Ground Rules of CAG
- Workshop – Six Groups presented concerns and ranked their importance.



CAG #1 Problem Statement Development Group Workshop

CAG MEETING #2 – November 14, 2017

- Reviewed CAG #1 presentation and workshop
- Community Context Audit/Survey Results
- Draft Problem Statement / Draft Purpose and Need
- Workshop Part 1 – Alternatives Analysis Evaluation
- Workshop Part 2 – Brainstorming Solutions



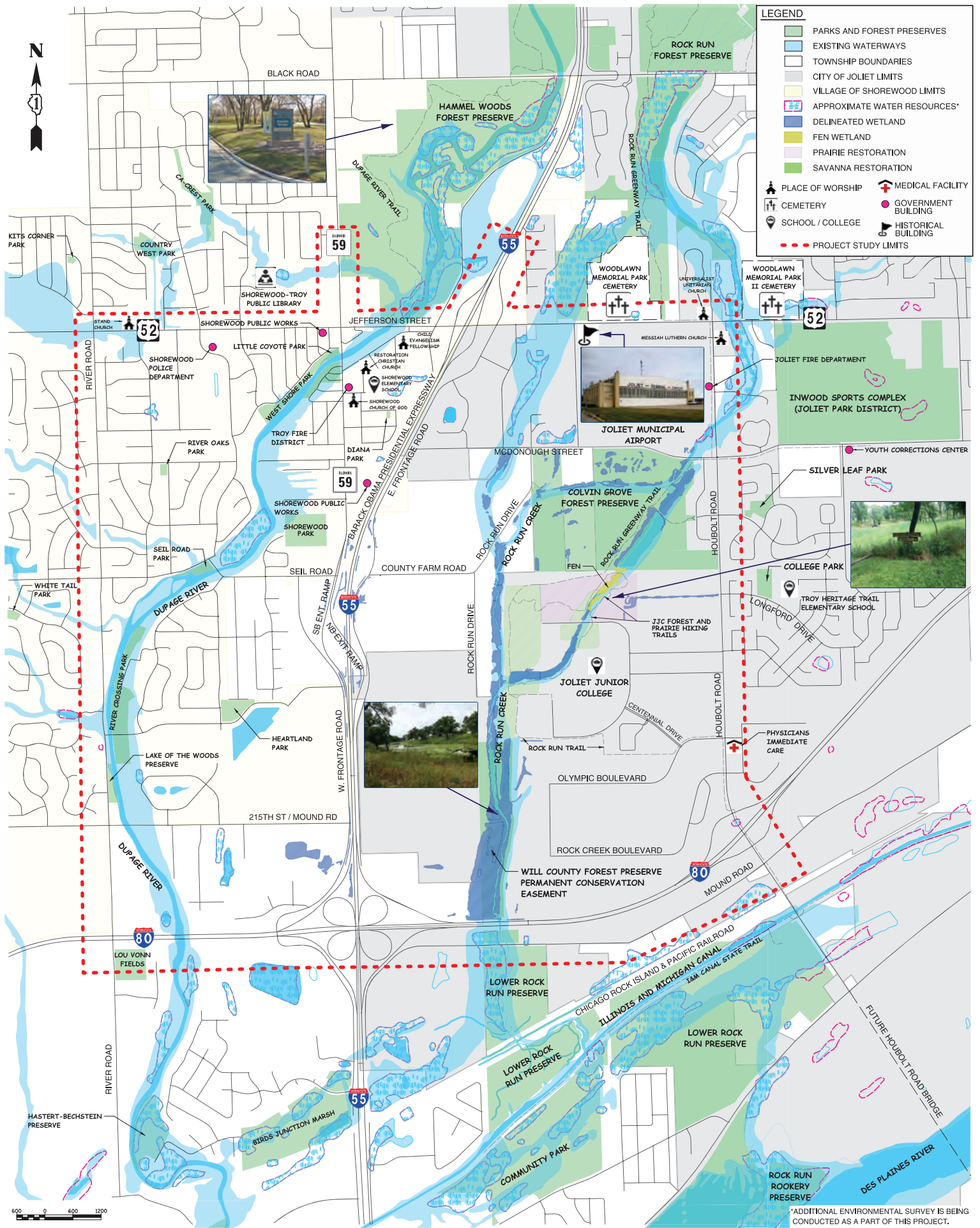
CAG #2 Alternative Analysis and Brainstorming Solutions Workshop

CAG MEETING #3 – March 15, 2018

- Reviewed CAG #2 Presentation and Workshop
- Project Purpose and Need
- Travel Demand Modeling
- Categories for Evaluation
- Alternatives Analysis Criteria and Matrix Evaluation
- Workshop – Introduce Alternatives and Solicit Input



CAG #3 Introduction of Alternatives Workshop



LEGEND

- PARKS AND FOREST PRESERVES
- EXISTING WATERWAYS
- TOWNSHIP BOUNDARIES
- CITY OF JOLIET LIMITS
- VILLAGE OF SHOREWOOD LIMITS
- APPROXIMATE WATER RESOURCES*
- DELINATED WETLAND
- FEN WETLAND
- PRAIRIE RESTORATION
- SAVANNA RESTORATION
- PLACE OF WORSHIP
- MEDICAL FACILITY
- CEMETERY
- GOVERNMENT BUILDING
- SCHOOL / COLLEGE
- HISTORICAL BUILDING
- PROJECT STUDY LIMITS



*ADDITIONAL ENVIRONMENTAL SURVEY IS BEING CONDUCTED AS A PART OF THIS PROJECT.

ENVIRONMENTAL STUDY

*This project is being studied in accordance with the
NATIONAL ENVIRONMENTAL POLICY ACT (NEPA) of 1969.*

STEP 1

Initiate Project

- Develop Purpose and Need
- Begin Coordination
- Develop Alternatives

STEP 2

Data Collection

- Environmental Surveys
- Compliance with Environmental Regulations

STEP 3

Alternatives Analysis

- AVOID** Environmental Resources if Reasonable and Feasible
- MINIMIZE** Impacts if Resources Cannot Be Avoided
- MITIGATE** Impacts if Unavoidable

STEP 4

Public Review of EA

- Document Findings in an Environmental Assessment (EA) Report
- EA Is Released For 45-Day Public Comment

STEP 5

Environmental Approval

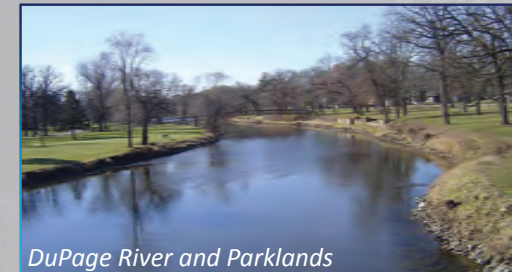
- Respond to Public Comments
- Complete Project Reports



- NEPA is a Federal Act To Ensure Consideration of Impacts to Natural/Social/Built Environment.
- Facilitates Open and Transparent Study Process.
- Study Elements To Be Evaluated Include:
 - Socio-Economics
 - Air and Noise
 - Farmlands
 - Parklands
 - Water Resources
 - Threatened & Endangered Species
 - Cultural & Archaeological Resources



Joliet Junior College Fen Wetland



DuPage River and Parklands



Rock Run Creek



Joliet Junior College Natural Areas

PURPOSE AND NEED

HOW WAS THE PURPOSE AND NEED DEVELOPED?

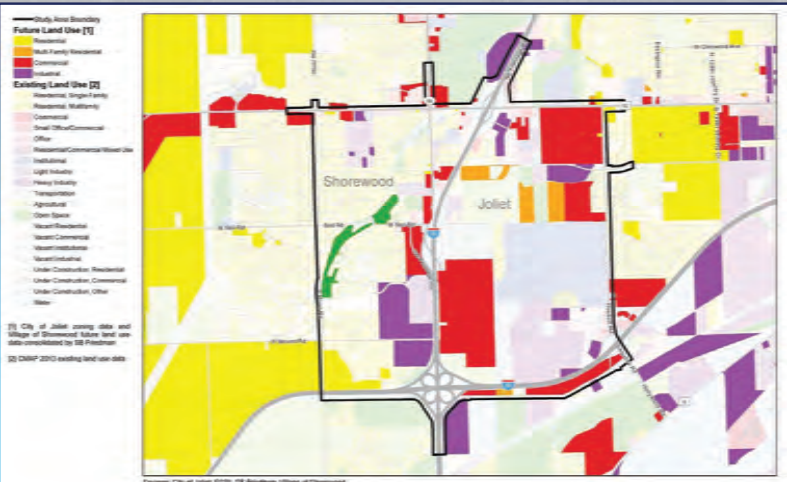
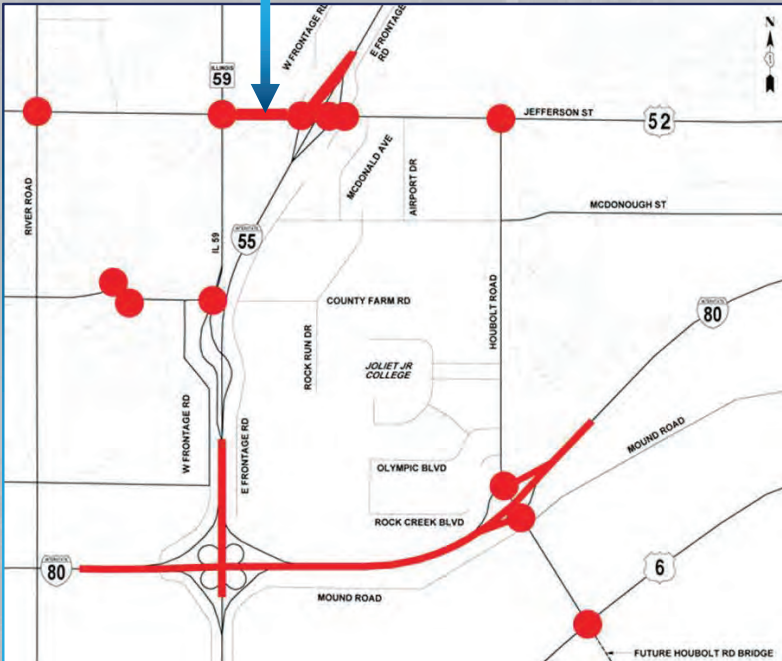


WHAT IS A PURPOSE AND NEED STATEMENT?

- Fundamental requirement for a project involving the NEPA process.
- Provides the foundation for project justification under NEPA and Section 404 of the Clean Water Act.
- Concise technical document providing information and facts about the transportation needs.
- Establishes the framework for which alternatives can be developed, measured and evaluated.
- Clarifies/describes why impacts may be acceptable based on the project needs

PROJECT PURPOSE

The purpose of the project is to provide an efficient transportation facility for both interstate travel, and for the regional and local roadway network accommodated by and affected by access to and from I-55 for the existing and the future transportation needs.



Study Area Existing and Future Land Use

Unacceptable Levels of Service (LOS) within the Study Area

ALTERNATIVES EVALUATION AND SCREENING PROCESS

Develop Initial Alternatives

EVALUATION CRITERIA IS THE INSTRUMENT IN WHICH AN ALTERNATIVE IS MEASURED TO DETERMINE THE ADVANTAGES AND DISADVANTAGES AND TO COMPARE WITH OTHER ALTERNATIVES.

Alternatives Screening
Utilize An Order of Magnitude Review

ELIMINATED ALTERNATIVES

SCREENING PROCESS CRITERIA

- Focus on safety & transportation benefits
- Best meet the stated needs of the project
- Environmental Resource Impacts
- Major Property and Land Use Impacts
- Cost

Alternatives Carried Forward

WE ARE HERE

Preferred Alternative

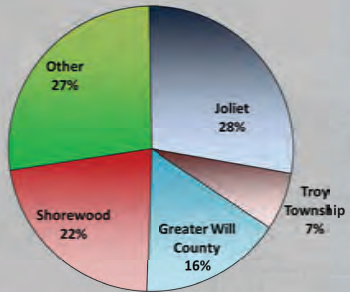


Screening Criteria From the Community Advisory Group

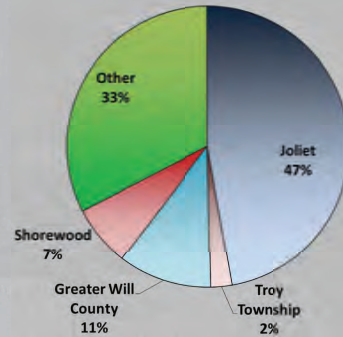
INITIAL PUBLIC INFORMATION MEETING AND PROJECT SURVEY RESULTS

COMMUNITY CONTEXT AUDIT / PROJECT SURVEY RESULTS

**SURVEY RESPONDENTS
RESIDENCY**

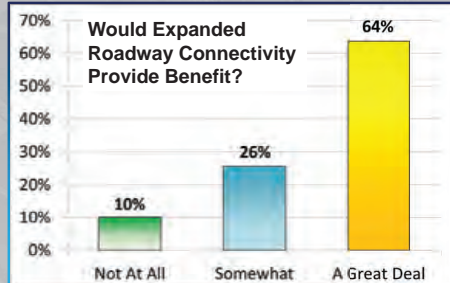
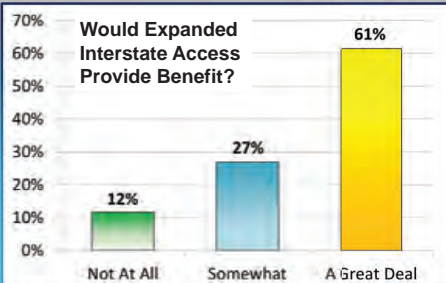


**SURVEY RESPONDENTS
PLACE OF EMPLOYMENT**

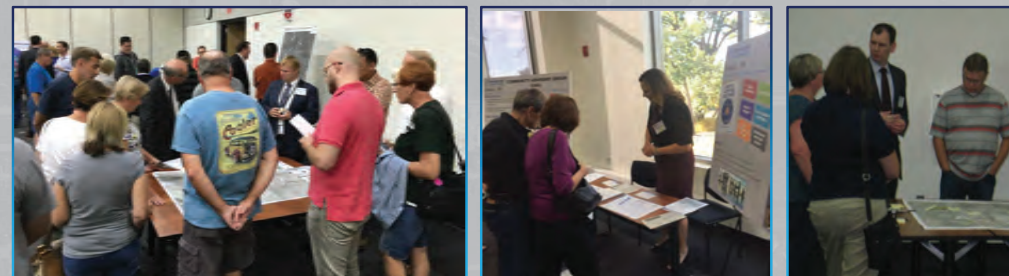
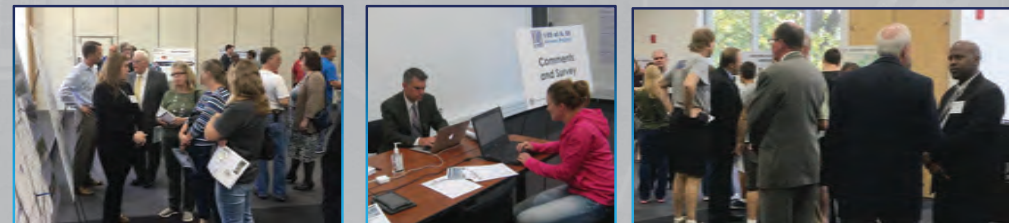
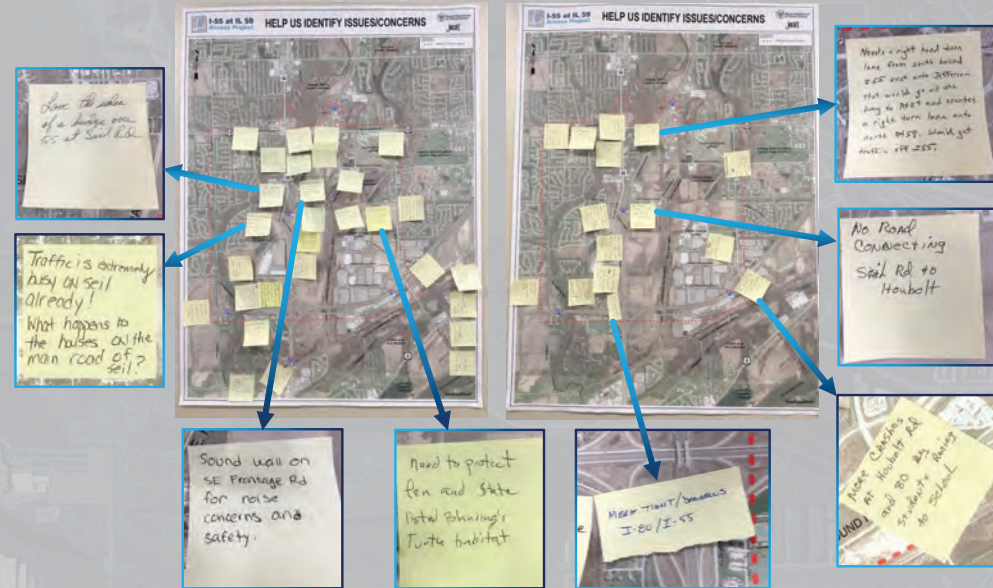


SURVEY RESULTS SUMMARY

- A total of **301** surveys were completed / Survey included **22** Questions
- 65% travel within/through study area at least 3 times per week.
- Routes avoided include: US 52, I-80 and I-55/I-80 Interchange.
- Alt. Routes: US 6, US 52, Black Rd, River Rd, Houbolt Rd, Neighborhood Streets, No Alts Available
- Safety concerns are relative to high truck volumes and speed.
- Traffic Congestion Level: 38% - "HIGH"; 52% - "MODERATE"; 10% - "LOW"
- 60% noted important natural areas and green space within the study area. Features identified: Rock Run Creek, Forest Preserves, JJC Trails, Fen, DuPage River, I&M Canal and Parklands.
- 50% responded that environmentally sensitive areas are present with majority of responses noting the JJC Natural Areas / Fen, Rock Run Creek, Forest Preserves, DuPage River and various wetlands.



HELP US IDENTIFY ISSUES/CONCERNS – SAMPLING OF COMMENTS



Photos of Public Information Meeting #1 – September 14, 2017