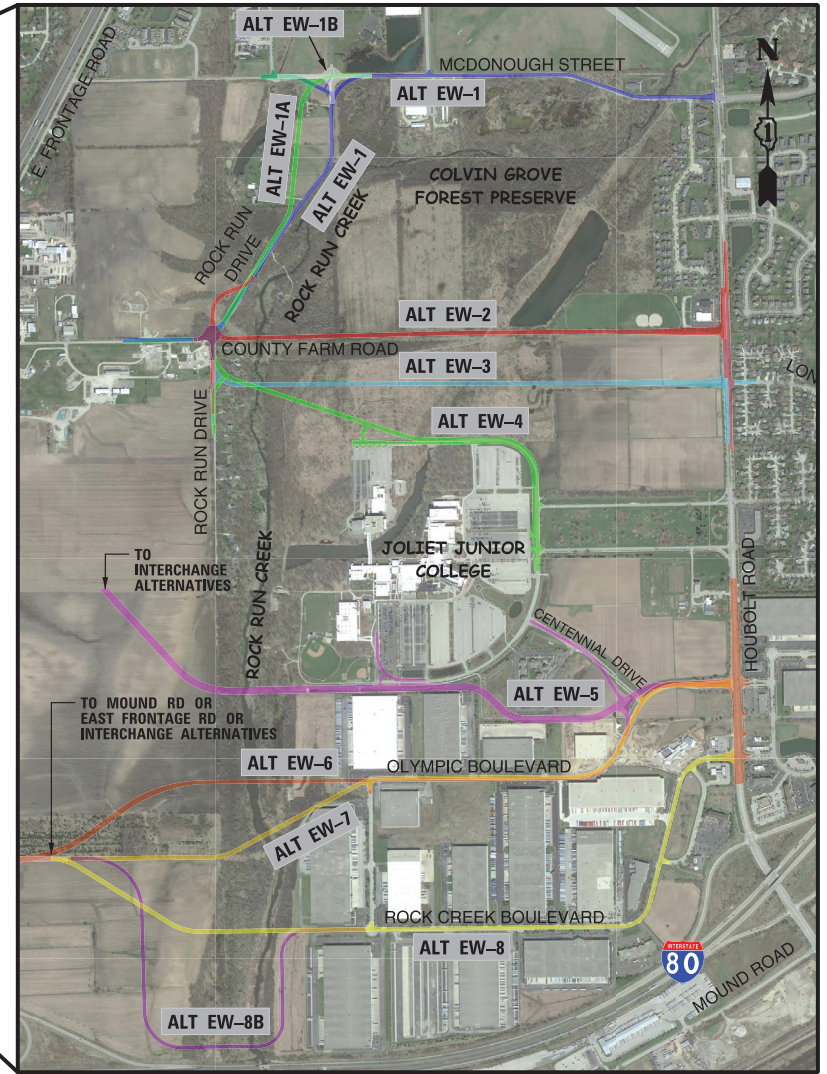
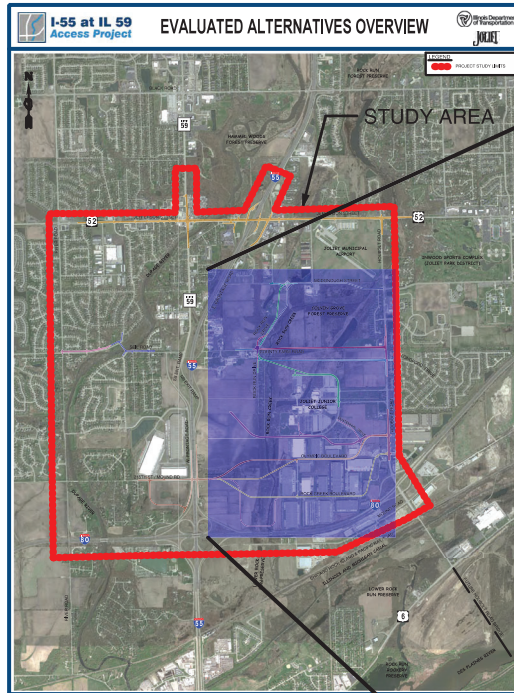




EAST-WEST ALTERNATIVES OVERVIEW






I-55 / IL 59 EAST-WEST ALTERNATIVES



- EW-1: IMPROVE/REALIGN MCDONOUGH STREET
- EW-1A: IMPROVE/REALIGN MCDONOUGH ST (AVOID FOREST PRESERVE)
- EW-1B: IMPROVE MCDONOUGH ST / ROCK RUN DR (ROUNDAABOUT)
- EW-2: COUNTY FARM ROAD EXTENSION (NORTH)
- EW-3: COUNTY FARM ROAD EXTENSION (SOUTH)
- EW-4: COUNTY FARM ROAD EXTENSION (JOLIET JUNIOR COLLEGE)
- EW-5: OLYMPIC BOULEVARD EXTENSION (NORTH)
- EW-6: OLYMPIC BOULEVARD EXTENSION
- EW-7: OLYMPIC BOULEVARD EXTENSION (SKEWED CROSSING)
- EW-8: ROCK CREEK BOULEVARD EXTENSION
- EW-8B: ROCK CREEK BOULEVARD EXTENSION (SOUTH)

East-West Connector Alternatives Screening Matrix (EW-Designations)

Alternative Description	Traffic Operations / BDE Geometrics		Major Utilities Impacts (Electrical Substations, Transmission Lines, Major Pipelines, etc.)	Social and Economic		Environmental				Natural Resources Prairie/Savannah Restoration Area*	Section 4F Properties Forest Preserves, Park, Park District	Agricultural Farmlands	Cost
	Geometric Concerns	Traffic Operations / LOS		Potential Residential Displacements	Potential Business Displacements	Fen*	Total Wetlands**	Flood Plains	Rivers, Creeks, and Tributaries Crossings (In-Stream Work)				
 EW-1 Improve McDonough Street		Allows for better east-west roadway continuity. McDonough Street becomes the through route with minimal delays.	No Major Utilities Impacted	0	0	No Fen Impacts	Approx. 0.0 - 0.1 acre impact	Existing Crossings	YES (Existing Roadway)	NO	YES Alignment through Colvin Grove Forest Preserve; Joliet Municipal Airport	NO	\$\$
 EW-1A Improve McDonough Street (Avoid Forest Preserve)		Allows for better east-west roadway continuity. McDonough Street becomes the through route with minimal delays.	No Major Utilities Impacted	1	0	No Fen Impacts	Approx. 0.0 - 0.1 acre impact	Existing Crossings	YES (Existing Roadway)	NO	YES Colvin Grove Forest Preserve Joliet Municipal Airport	NO	\$\$
 EW-1B Improve McDonough Street and Rock Run Drive (Roundabout Intersection)		Does not provide a freeflow east-west route. Requires vehicles to slow at roundabout and incur delay compared to free-flow options.	No Major Utilities Impacted	0	0	No Fen Impacts	Approx. 0.0 - 0.1 acre impact	Existing Crossings	YES (Existing Roadway)	NO	YES Colvin Grove Forest Preserve Joliet Municipal Airport	NO	\$
 EW-2 County Farm Road Extension (N)	New Traffic Signal on Houbolt Road; Does not meet signal spacing requirements from existing Longford Drive Signal.	Requires left and right turning movements on Houbolt Road between McDonough Street and County Farm Road Extension.	East-West Pipelines in conflict	0	0	Approx. 0.3-0.4 acre Impacts	Approx. 0.3 - 0.5 acre impact	2 New Crossings	YES (New Roadway)	POTENTIAL IMPACT	YES Colvin Grove Forest Preserve	YES	\$\$\$
 EW-3 County Farm Road Extension (S)		Requires left and right turning movements on Houbolt Road between McDonough Street and County Farm Road Extension.	Pipeline Facilities Above Ground and Below Ground Likely Impacted	3	0	Approx. 0.1-0.2 acre Impacts	Approx. 0.8 - 1.0 acre impact	2 New Crossings	YES (New Roadway)	YES	YES Joliet Junior College	YES	\$\$\$
 EW-4 JJC Ring Road Extension	Poor LOS at JJC and Houbolt Road	JJC Ring Road, Poor Connectivity/Convulated Routing. LOS problematic at Houbolt Road with heavy college traffic.	Pipeline Facilities Above Ground and Below Ground Likely Impacted	3	0	No Fen Impacts	Approx. 0.2 - 0.3 acre impact	1 Existing Crossing; 1 New Crossing	YES (New Roadway)	YES	YES Joliet Junior College	NO	\$
 EW-5 Olympic Blvd Extension North		Scenario with Interchange Only (No Northern E-W improvement) and No Mound Road Bridge results in E Frontage Rd Experiencing Traffic Increase & Poor LOS at US 52	Power Lines Parallel East-West Conflict	0	0	No Fen Impacts	Approx. 1.0 - 1.1 acre impact	1 New Crossing	YES (New Roadway)	POTENTIAL IMPACT	YES Lower Rock Run Preserve through Rock Run Conservation Easement Joliet Junior College	YES	\$\$\$
 EW-6 Olympic Blvd Extension		Scenario with Interchange Only (No Northern E-W improvement) and No Mound Road Bridge results in E Frontage Rd Experiencing Traffic Increase & Poor LOS at US 52	No Major Utilities Impacted	0	0	No Fen Impacts	Approx. 0.4 - 0.5 acre impact	1 New Crossing	YES (New Roadway)	NO	YES Lower Rock Run Preserve through Rock Run Conservation Easement	YES	\$\$
 EW-7 Olympic Blvd Extension (Skewed Crossing)		Scenario with Interchange Only (No Northern E-W improvement) and No Mound Road Bridge results in E Frontage Rd Experiencing Traffic Increase & Poor LOS at US 52	No Major Utilities Impacted	0	0	No Fen Impacts	Approx. 1.1 - 1.2 acre impact	1 New Crossing	YES (New Roadway)	NO	YES Lower Rock Run Preserve through Rock Run Conservation Easement	YES	\$\$\$
 EW-8 Rock Creek Blvd Extension	High northbound left turning volume of traffic to Rock Creek Blvd will queue into Houbolt Road / I-80 DDI due to inadequate storage between intersections. Weaving between intersection and exit ramp is also an issue.	Scenario with Interchange Only (No Northern E-W improvement) and No Mound Road Bridge results in E Frontage Rd Experiencing Traffic Increase & Poor LOS at US 52	No Major Utilities Impacted	0	0	No Fen Impacts	Approx. 1.1 - 1.2 acre impact	1 New Crossing	YES (New Roadway)	NO	YES Lower Rock Run Preserve through Rock Run Conservation Easement	YES	\$\$
 EW-8B Rock Creek Blvd Extension (South)	High northbound left turning volume of traffic to Rock Creek Blvd will queue into Houbolt Road / I-80 DDI due to inadequate storage between intersections. Weaving between intersection and exit ramp is also an issue.	Scenario with Interchange Only (No Northern E-W improvement) and No Mound Road Bridge results in E Frontage Rd Experiencing Traffic Increase & Poor LOS at US 52	Potential Underground Stormwater Storage Facility	0	0	No Fen Impacts	Approx. 1.0 - 1.1 acre impact	1 New Crossing	YES (New Roadway)	NO	YES Lower Rock Run Preserve through Rock Run Conservation Easement	YES	\$\$

LEGEND

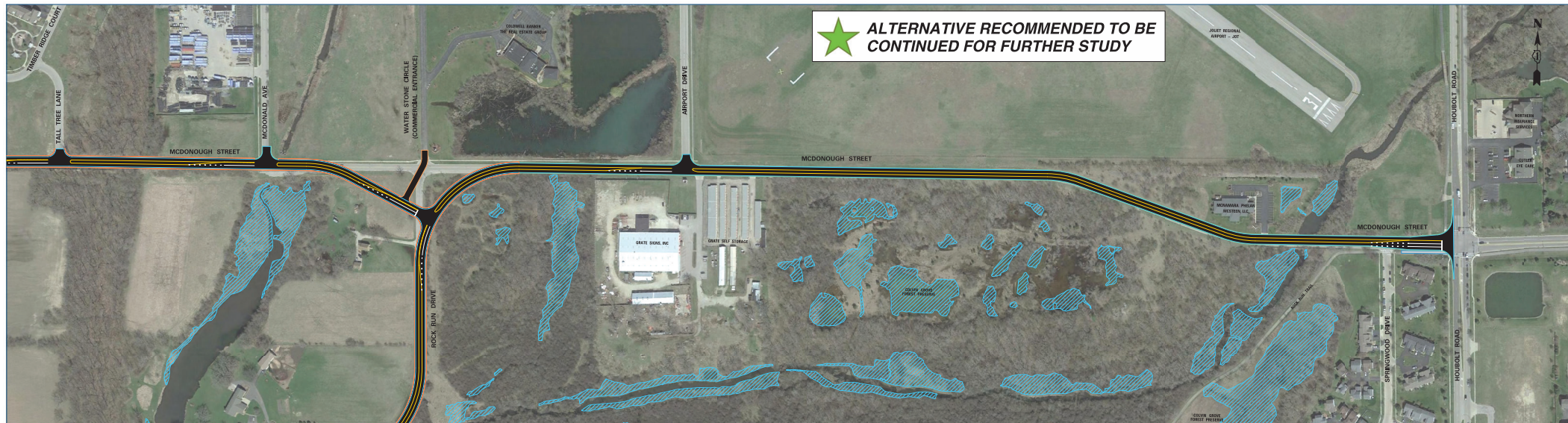
-  DENOTES CONDITIONS WITH MINIMAL ANTICIPATED IMPACTS
-  DENOTES CONDITIONS WITH MODERATE ANTICIPATED IMPACTS
-  DENOTES CONDITIONS WITH GREATER ANTICIPATED IMPACTS

-  DENOTES ALTERNATIVE RECOMMENDED TO BE ELIMINATED FROM FURTHER STUDY
-  DENOTES ALTERNATIVE RECOMMENDED TO BE CONTINUED FOR FURTHER STUDY

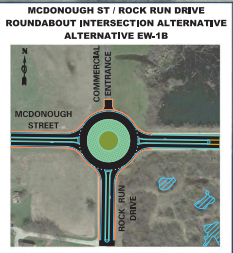
* Known Federally Listed Threatened and Endangered Species

** Total Wetlands Impact Area includes the Fen Impact Area if applicable

 **ALTERNATIVE RECOMMENDED TO BE CONTINUED FOR FURTHER STUDY**



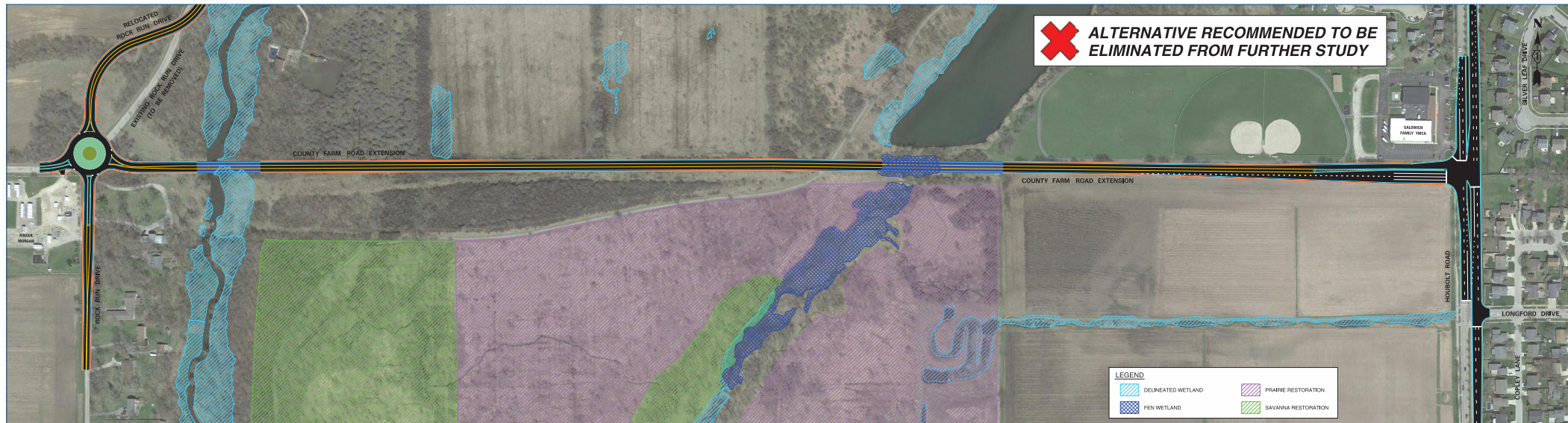
 **ALTERNATIVE RECOMMENDED TO BE CONTINUED FOR FURTHER STUDY**



LOCAL ROADWAY EAST-WEST ALTERNATIVE EW-1A AND EW-1B

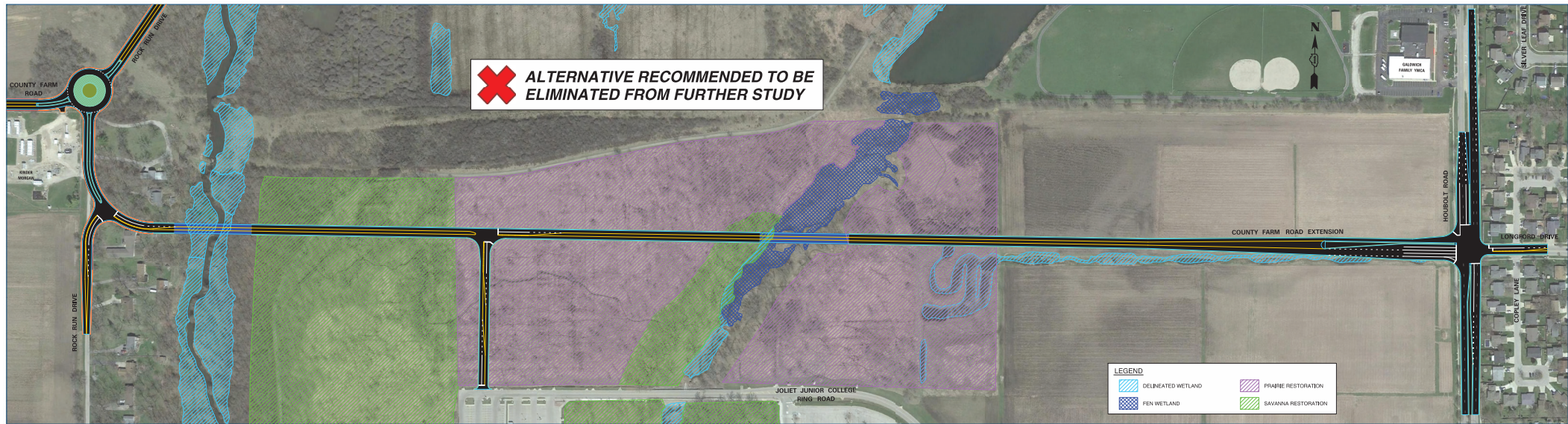
PRELIMINARY





X ALTERNATIVE RECOMMENDED TO BE ELIMINATED FROM FURTHER STUDY

LEGEND	
	DELINEATED WETLAND
	FEN WETLAND
	PRAIRIE RESTORATION
	SAVANNA RESTORATION

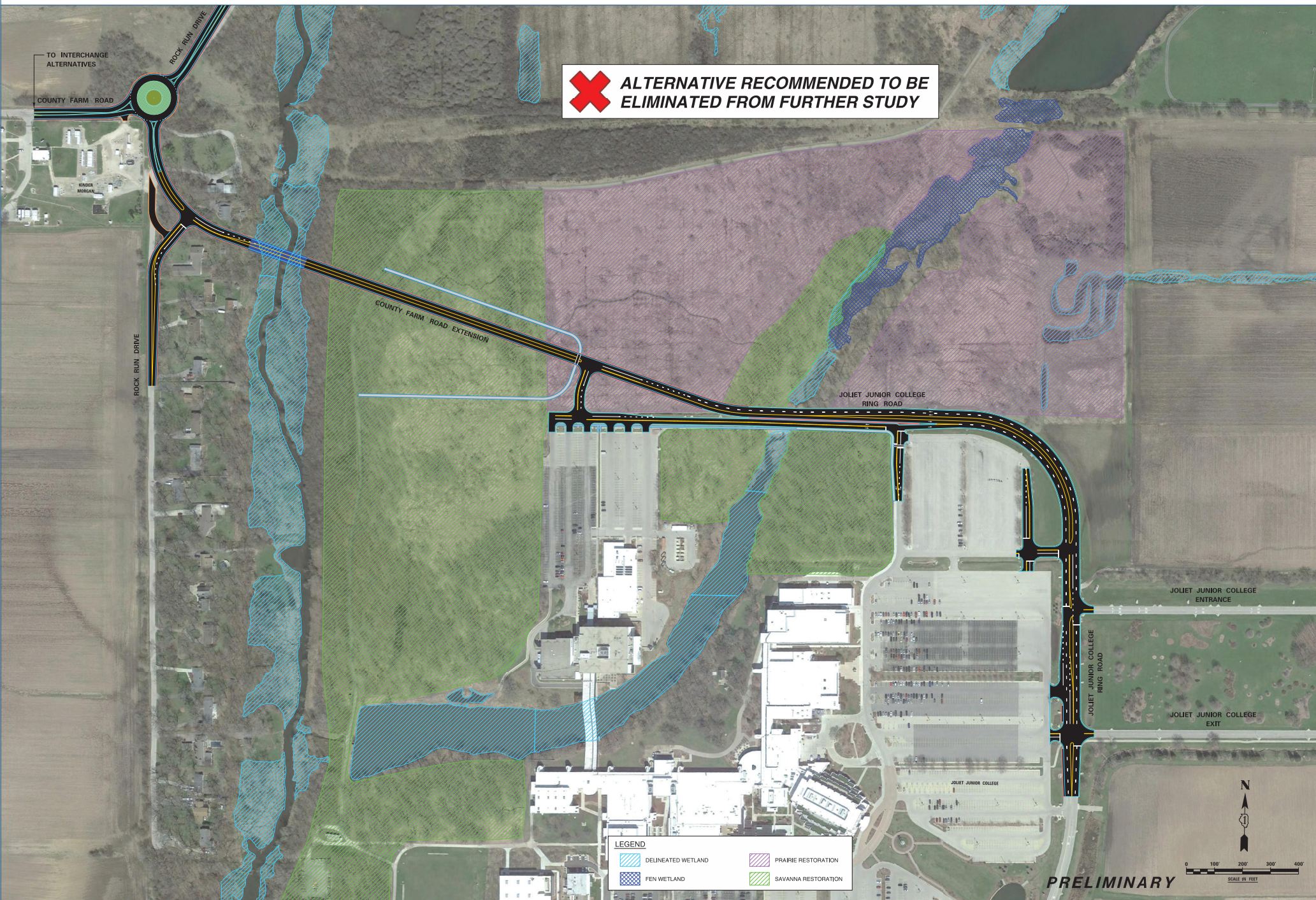


X ALTERNATIVE RECOMMENDED TO BE ELIMINATED FROM FURTHER STUDY

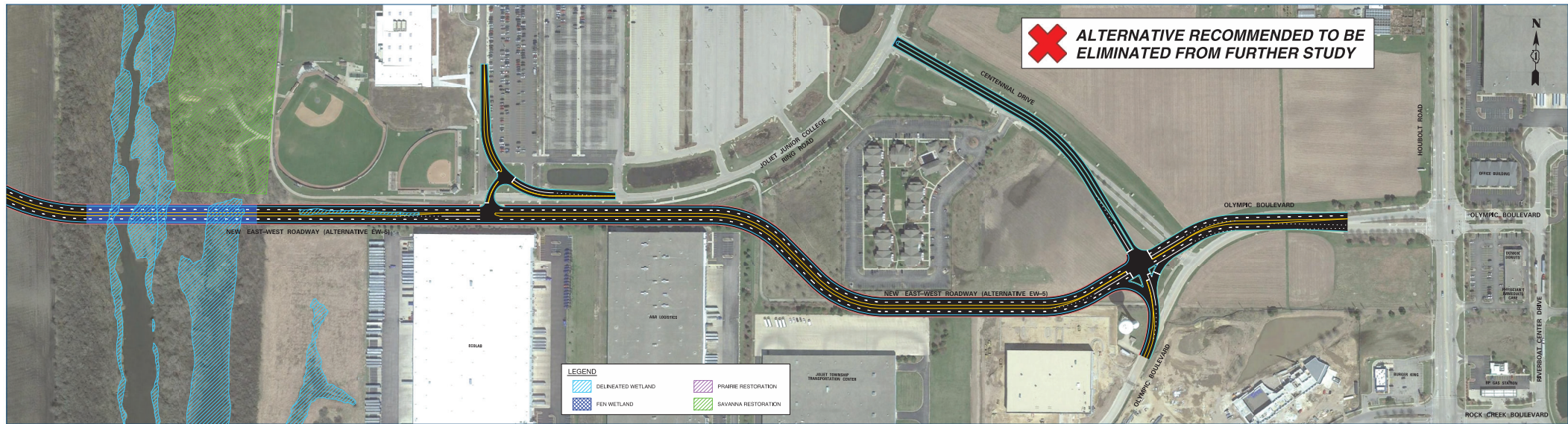
LEGEND	
	DELINEATED WETLAND
	FEN WETLAND
	PRAIRIE RESTORATION
	SAVANNA RESTORATION



LOCAL ROADWAY EAST-WEST ALTERNATIVE EW-4



X ALTERNATIVE RECOMMENDED TO BE ELIMINATED FROM FURTHER STUDY



LEGEND

	DELINEATED WETLAND		PRAIRIE RESTORATION
	FEN WETLAND		SAVANNA RESTORATION



 **ALTERNATIVE RECOMMENDED TO BE CONTINUED FOR FURTHER STUDY**

LEGEND	
	DELINEATED WETLAND
	FEN WETLAND
	PRAIRIE RESTORATION
	SAVANNA RESTORATION

X ALTERNATIVE RECOMMENDED TO BE
ELIMINATED FROM FURTHER STUDY

OLYMPIC BOULEVARD EXTENSION

OLYMPIC BOULEVARD

ROCK CREEK BOULEVARD
COMMERCIAL LANE

X ALTERNATIVE RECOMMENDED TO BE ELIMINATED FROM FURTHER STUDY





LOCAL ROADWAY EAST-WEST ALTERNATIVE EW-8B



ALTERNATIVE RECOMMENDED TO BE ELIMINATED FROM FURTHER STUDY



PRELIMINARY

